

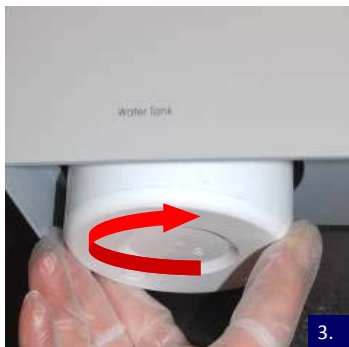
PLEASE  
hang up  
by the unit

## Check & Clean for NitraDem Direct Connect

This procedure should be performed once a week

### Cleaning of the water tank and water inlet filter

- PLEASE make sure to wear surgical gloves during this procedure!



1. Turn off the power supply to the NitraDem Direct Connect control panel.
2. Turn off the 'Tap Water Inlet' ball-tap on the control panel. The tap is closed when it is pointing horizontally forward – as shown.
3. Dismount the tank, which is placed at 'Water Tank', by screwing it counter-clockwise. Pay attention to the fact that there is water in the tank.
4. Clean the tank thoroughly with ordinary dish soap/sulphonamide. If the tank has been damaged, it is possible to order a new tank (REF: 6306562) separately at your NitraDem supplier.
5. Gently wipe the four water sensors, with a cloth wringed in ordinary household vinegar.
6. Mount the tank again when it has been cleaned, by screwing it clockwise back into the control panel.

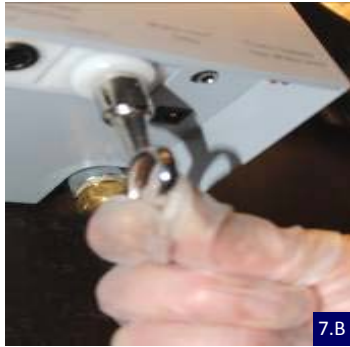
PLEASE  
hang up  
by the unit

## Check & Clean for NitraDem Direct Connect

This procedure should be performed once a week

### Cleaning of the water tank and water inlet filter

- PLEASE make sure to wear surgical gloves during this procedure!



7. Dismount the white plug at 'Water Inlet Filter' (REF: 6306356) with the enclosed key (REF: 6306448). Pay attention to the fact that there is water in the system; this will come out when the plug is dismounted.

When the plug is dismounted, also the filter comes out.

Pay attention to the fact that together with the filter a small o-ring is mounted; this might also come out together with the filter.



8. Rinse the filter (REF: 6306455) in water and push the open side of the filter back into the white plug.

If the o-ring has also come out, this must be placed on the closed surface of the filter, as shown.

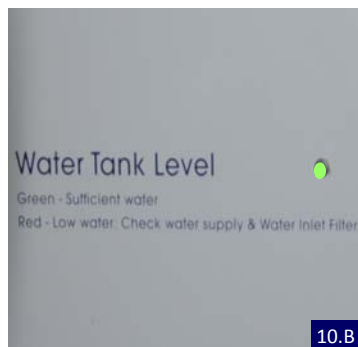
The open surface of the filter is pushed down into the white plug and the plug (incl. filter and perhaps o-ring) is then mounted back into the panel with the key.



9. Turn on the 'Tap Water Inlet' ball tap on the NitraDem Direct Connect panel and the power supply.

10. Press one or more times with a small screw-driver or a similar object on the 'Refill' button.

The 'Refill' button is placed on the side of the panel, close to the 'Tap Water Inlet' ball-tap.



After this the water tank in the panel will be filled with water. The diode for 'Water Tank Level' will light green when the level of water in the tank is sufficient.

The system is once again ready for use.